

Technical details

Temperature range	-10°C ... +50°C
Medium	Filtered, oil-free and dried compressed air according to ISO 8573-1:2010, Class 7:2:4, instrument air, free of aggressive additives. Alternatively the pressure dew point must be at least 10°C below lowest occurring ambient temperature.
Materials	Body: Al (anodized), plastic, seals: NBR
Protection	IP 65 according to EN 60529



Manifold system with integrated electrical connection including LED indicators. Each station can accommodate two 3/2-way valves or one 5/2- or 5/3-way valve. All connections are accessible from the front. The valves and the multi-pin plug with cable must be ordered separately. The valve terminal is delivered pre-assembled and function-tested. If not specified with the order, valve configuration is as follows: Valves are mounted according to their order number, starting with high numbers at the side of the multi-pin, ending with low numbers on the opposite side, followed by blind plates (if ordered).

Order code

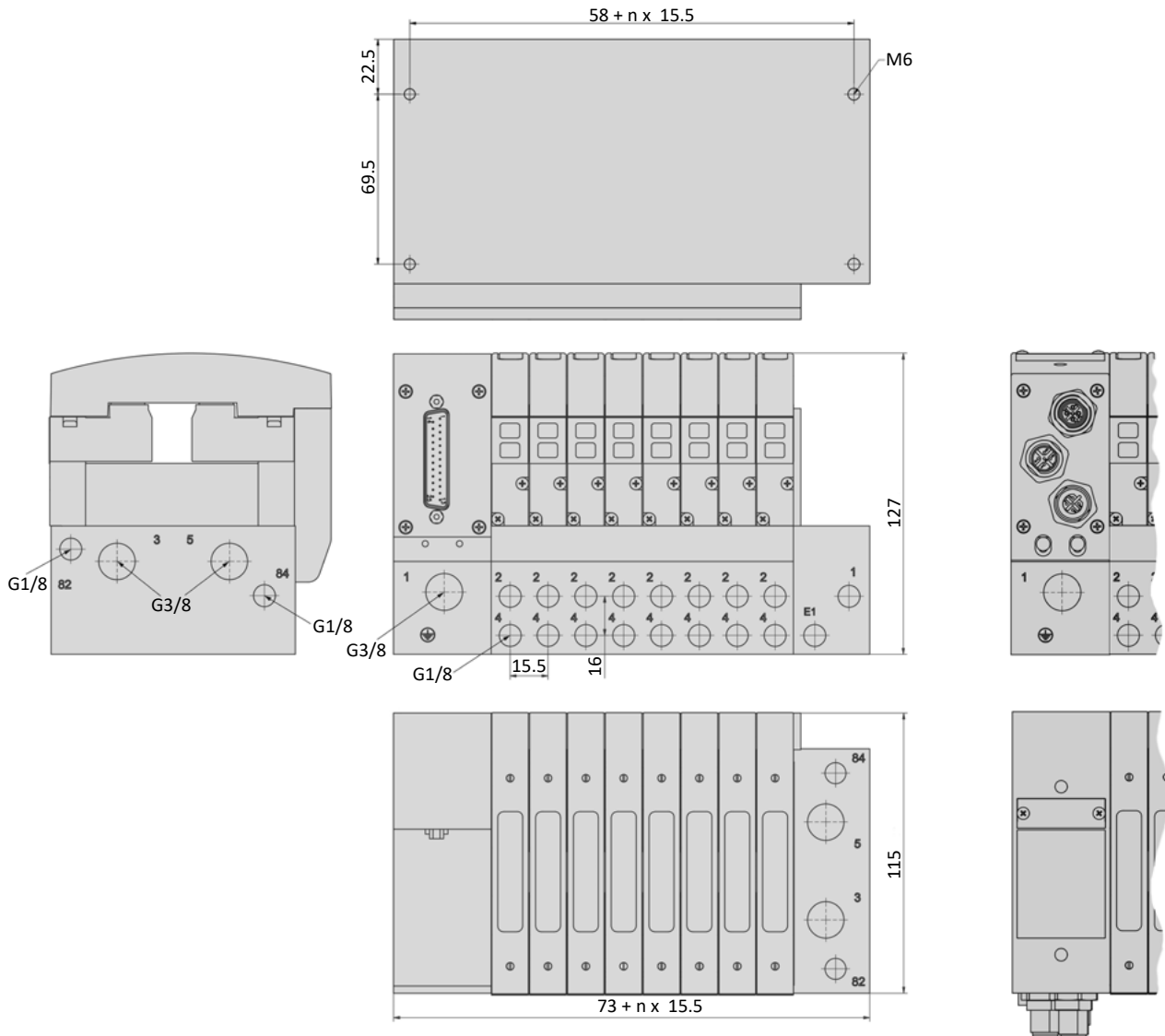
RE-46/**-*-****-****	
Series	Pneumatical connections
Number of stations	00 G1/8 at 2 and 4 G3/8 at 1
04 4 stations	60 tube connection Ø 6 at 2 and 4 tube connection Ø 10 at 1
06 6 stations	61 tube connection Ø 6 at 2 and 4 tube connection Ø 8 at 1
08 8 stations	62 tube connection Ø 6 at 2 and 4 tube connection Ø 12 at 1
10 10 stations	80 tube connection Ø 8 at 2 and 4 tube connection Ø 10 at 1
12 12 stations	81 tube connection Ø 8 at 2 and 4 tube connection Ø 8 at 1
14 14 stations	82 tube connection Ø 8 at 2 and 4 tube connection Ø 12 at 1
16 16 stations	
18 18 stations	Pilot air
20 20 stations	0 internal (standard)
22* 22 stations	E external
24* 24 stations	
* only for terminals with Bus connection	Electrical options
Position of the pneumatic connection	M-1 Multi-pin
blank at the side	AS3 AS-Interface (only for 4, 8 and 12 stations)
G* at the bottom	B1-1 Profibus-DP
* only for 8, 12, 16 and 24 stations	B6-1 CANopen
	B7-1 Profinet-RT
	B8-1* EtherCAT
	* on request



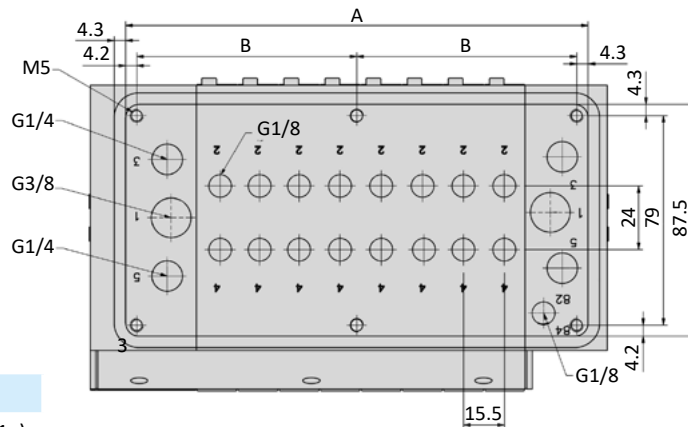
More detailed information about the installation you find in the manual at www.airtec.de.

Dimensions

Multi-pin, Bus connection



Version RE-46-G



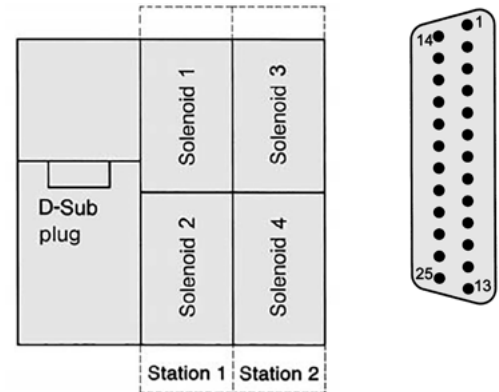
Model-No.:	A	B
RE-46/08-G	174,5	83 (1x)
RE-46/12-G	236,5	76 (2x)
RE-46/16-G	298,5	72,5 (3x)
RE-46/24-G	422,5	82,8 (4x)

- 1 = pressure inlet
- 2,4 = outlets
- 3,5 = exhausts
- 82,84 = solenoid exhausts
- n = number of stations

Electrical options
Multi-pin, 2 up to 12 stations

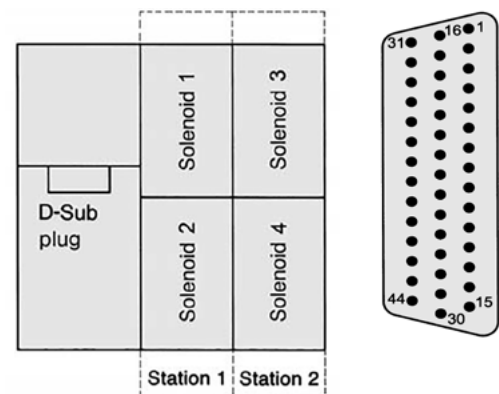
The 25-pin multi plug (see page 7-19) has to be ordered separately.

Pin	Function	Wire color	Pin	Function	Wire color
1	GND	white	14	solenoid 2	brown/ green
2	solenoid 1	brown	15	solenoid 4	white/ yellow
3	solenoid 3	green	16	solenoid 6	yellow/ brown
4	solenoid 6	yellow	17	solenoid 8	white/ grey
5	solenoid 7	grey	18	solenoid 10	grey/ brown
6	solenoid 9	pink	19	solenoid 12	white/ pink
7	solenoid 11	blue	20	solenoid 14	pink/ brown
8	solenoid 13	red	21	solenoid 16	white/ blue
9	solenoid 15	black	22	solenoid 18	brown/ blue
10	solenoid 17	violet	23	solenoid 20	white/ red
11	solenoid 19	grey/ pink	24	solenoid 22	brown/ red
12	solenoid 21	red/ blue	25	solenoid 24	white/ black
13	solenoid 23	white/ green			


Multi-pin, 14 up to 20 stations

The 44-pin multi plug (see page 7-19) has to be ordered separately.

Pin	Function	Wire color	Pin	Function	Wire color
1	GND	white	23	solenoid 20	white/ red
2	solenoid 3	brown	24	solenoid 23	brown/ red
3	solenoid 5	green	25	solenoid 26	white/ black
4	solenoid 9	yellow	26	solenoid 29	brown/ black
5	solenoid 12	grey	27	solenoid 32	grey/ green
6	solenoid 15	pink	28	solenoid 35	yellow/ grey
7	solenoid 18	blue	29	solenoid 38	pink/ green
8	solenoid 21	red	30	-	yellow/ pink
9	solenoid 24	black	31	solenoid 1	green/ blue
10	solenoid 27	violet	32	solenoid 4	yellow/ blue
11	solenoid 30	grey/ pink	33	solenoid 7	green/ red
12	solenoid 33	red/ blue	34	solenoid 10	yellow/ red
13	solenoid 36	white/ green	35	solenoid 13	green/ black
14	solenoid 39	brown/ green	36	solenoid 16	yellow/ black
15	-	white/ yellow	37	solenoid 19	grey/ blue
16	GND	yellow/ brown	38	solenoid 22	pink/ blue
17	solenoid 2	white/ grey	39	solenoid 25	grey/ red
18	solenoid 5	grey/ brown	40	solenoid 28	pink/ red
19	solenoid 8	white/ pink	41	solenoid 31	grey/ black
20	solenoid 11	pink/ brown	42	solenoid 34	pink/ black
21	solenoid 14	white/ blue	43	solenoid 37	blue/ black
22	solenoid 17	brown/ blue	44	solenoid 40	red/ black


AS-Interface

Bus connector	AS-Interface connector
Power connector	AS-Interface connector
Bus-Voltage	18.5 ... 31.6 V DC
Power-Voltage	24 V DC ± 10%
Address selection	Low voltage switch plug Ø 1.3 mm, slave selection by DIP-switch



Electrical options

Profibus-DP

Bus connector	Bus In: plug M12 5-pin B-code Bus Out: socket M12 5-pin B-code
Power connector	plug M12 5-pin A-code
Baud rate	9.6 Kbit/s ... 12 Mbit/s, automatic adjustment
Voltage	24 V DC \pm 10%
Power consumption	2.9 W
Address selection	by 2 decimal coded rotary switches.
Bus terminal resistance	external over Bus Out socket



CANopen

Bus connector	Bus In: plug M12 5-pin A-code Bus Out: socket M12, 5-pin, A-code
Power connector	plug M12 5-pin A-code
Baud rate	10 Kbit/s ... 1 Mbit/s
Voltage	24 V DC \pm 10%
Power consumption	2.9 W
Address selection	by 2 decimal coded rotary switches.
Bus terminal resistance	external over Bus Out socket



Profinet-RT

Bus connector	Bus In: socket M12, 4-pin, D-code Bus Out: socket M12, 4-pin, D-code
Power connector	plug M12 5-pin A-code
Baud rate	100 Mbit/s, full duplex
Voltage	24 V DC \pm 10%
Power consumption	3.6 W
Address selection	by controller-remote



EtherCAT

Bus connector	Bus In: socket M12, 4-pin, D-code Bus Out: socket M12, 4-pin, D-code
Power connector	plug M12 5-pin A-code
Baud rate	100 Mbit/s, full duplex
Voltage	24 V DC \pm 10%
Power consumption	3.5 W

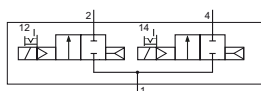


Technical details

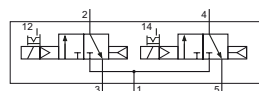
Outlets	according to the pneumatically connections of the terminal
Temperature range	-10°C ... +50°C
Medium	Filtered, oil-free and dried compressed air according to ISO 8573-1:2010, Class 7:2:4, instrument air, free of aggressive additives. Alternatively the pressure dew point must be at least 10°C below lowest occurring ambient temperature.
Materials	Body: Al (anodized), plastic, seals: NBR, inner parts: Al, stainless steel and brass
Nominal voltage	24 V DC, ± 10%
Power consumption	1.3 W
Protection	IP 65 according to EN 60529



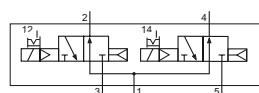
Electrically operated spool valve. The manual override is non-detent. The manual override is located on top of the valve cover.

2/2-way-valve


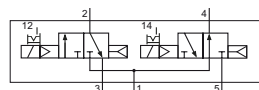
KF-46-210/2-HN-S12
2 x 2/2-way, single solenoid, air spring return, NC

2 x 3/2-way-valves


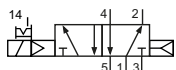
KF-46-310/2-HN-S12
2 x 3/2-way, single solenoid, air spring return, NC



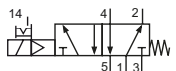
KF-46-312/2-HN-S12
2 x 3/2-way, single solenoid, air spring return, NO



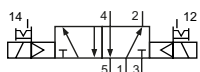
KF-46-314/2-HN-S12
2 x 3/2-way, single solenoid, air spring return, 1 x NC, 1 x NO

5/2-way-valves


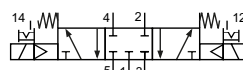
KF-46-510-HN-S12
5/2-way, single solenoid, air spring return



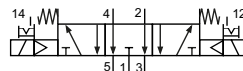
KF-46-511-HN-S12
5/2-way, single solenoid, mechanical spring return



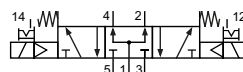
KF-46-520-HN-S12
5/2-way, double solenoid

5/3-way-valves


KF-46-530-HN-S12
5/3-way, center position closed



KF-46-533-HN-S12
5/3-way, center position exhausted



KF-46-534-HN-S12
5/3-way, center position pressurized

Technical data

Model-no.:	KF-46-210/2-HN-S12	KF-46-310/2-HN-S12	KF-46-312/2-HN-S12	KF-46-314/2-HN-S12
Operating pressure (bar)	2.5...8	2.5...8	2.5...8	2.5...8
Pilot pressure (bar) *	2.5...8	2.5...8	2.5...8	2.5...8
Nominal size (mm)	4.5	4.5	4.5	4.5
Flow rate (NI/min)	430	430	630	430 / 630 (NC / NO)
Response time (ms) at 6 bar	on: 15 off: 28	on: 15 off: 28	on: 15 off: 28	on: 15 off: 28
Weight (kg)	0.188	0.188	0.188	0.188

* Valves are not suitable for external pilot supply.

Series RE-46








Technical data

Model-no.:	KF-46-510-HN-S12	KF-46-511-HN-S12	KF-46-520-HN-S12
Internal pilot pressure			
Operating pressure (bar)	2.5...8	2.5...8	2.5...8
Pilot pressure (bar)	2.5...8	2.5...8	2.5...8
External pilot pressure			
Operating pressure (bar)	- *	0...10	0...10
Pilot pressure (bar)	- *	3...8	3...8
Nominal size (mm)	6	6	6
Flow rate (NI/min)	950	810	950
Response time (ms) at 6 bar	on: 15 off: 31	on: 14 off: 33	on: 20 off: 20
Weight (kg)	0.158	0.158	0.188

* Valves are not suitable for external pilot supply.

Model-no.:	KF-46-530-HN-S12	KF-46-533-HN-S12	KF-46-534-HN-S12
Internal pilot pressure			
Operating pressure (bar)	3...8	3...8	3...8
Pilot pressure (bar)	3...8	3...8	3...8
External pilot pressure			
Operating pressure (bar)	0...10	0...10	0...10
Pilot pressure (bar)	3...8	3...8	3...8
Nominal size (mm)	6	6	6
Flow rate (NI/min)	680	680	680
Response time (ms) at 6 bar	on: 20 off: 30	on: 20 off: 30	on: 20 off: 30
Weight (kg)	0.188	0.188	0.188

Accessories

	Model-no.: RE-19-DT Pressure dividing plug		Model-no.: 28-ST-46-M1-yy-xxx 25- or 44-pin multi plug, straight yy = 25 25-pin yy = 44 44-pin xxx = 105 5 m cable xxx = 110 10 m cable
	Model-no.: RE-46-RSV Check valve		Model-no.: 28-ST-146-M1-yy-xxx 25- or 44-pin multi plug, 90° yy = 25 25-pin yy = 44 44-pin xxx = 105 5 m cable xxx = 110 10 m cable
	Model-no.: RE-46-B-01 Mounting bracket (pair)		Model-no.: 28-ST-RE-46-xx-yy Connector kit xx = 01 in- and output xx = 02 with termination resistance yy = B1 Profibus yy = B6 CANopen
	Model-no.: RE-x6-V-EP x = 1 Blind plate, set x = 4 Blind plate for valve and coil station		